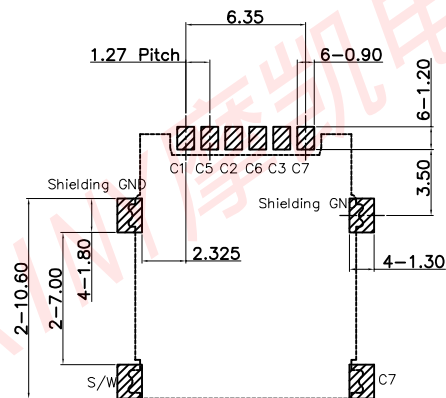
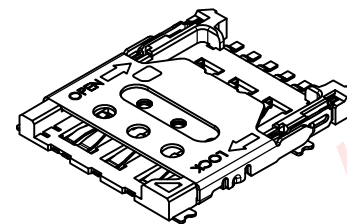
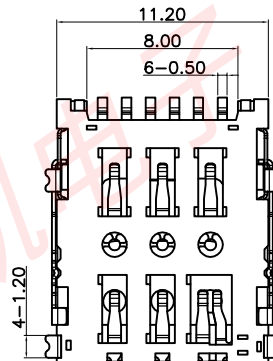
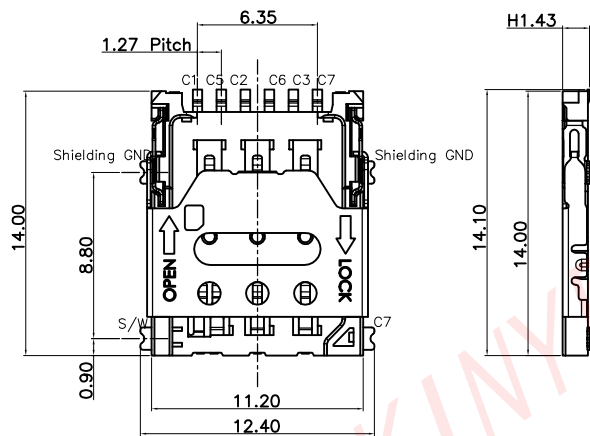
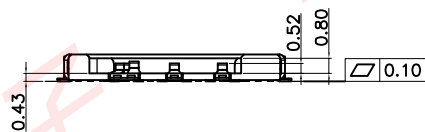


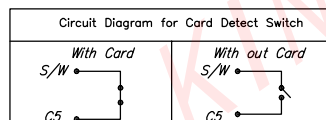
* 所有原料材质, 生产制程, 电镀必须符合HTR要求



Recommended PCB Layout (Top View)
General Tolerance ± 0.05



PIN NO.	PIN NAME
C1	VCC
C2	RST
C3	CLK
C5	GND
C6	VPP
C7	I/O
S/W	SWTSH PIN



Specification

MATERIAL:

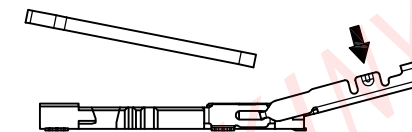
Insulator: High Temperature Thermoplastic, UL 94V-0.
Contact: Copper Alloy
SHELL: Stainless Stell

PLATING:

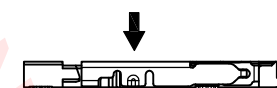
Contact: Plated 50u'' Ni Overall Contact ALL Au 1U,
Shell: ALL NI 30U/MIN

Electrical:

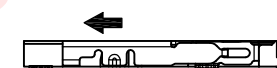
Current Rating : 0.5mA AC/DC max.
Voltage Rating :125V AC/DC
Ambient Temperature Range :-20° C~+60° C
Storage Temperature Range :-40° C~+70° C
Ambient Humidity Range :95% R.H. Max.
Contact Resistance:80m Ω max.
Insulation Resistance:100M Ω min./100V DC
Mating Cycles:5,000 Insertions
Reflow peak temp.: 260° C $\pm 5^\circ$ C, 3~5 S



Step 1: Lift the cover and put in NanoSIM card



Step 2: Close the cover



Step 3: Push lock

KINY

东莞市摩凯电子有限公司

DIMENSIONS INIT: mm
UNLESS OTHERWISE SPECIFIABLE

DIMENSION	TOLERANCE
X.X: \pm	0.35
X.XX: \pm	0.25
X.XXX: \pm	0.10
ANGULAR: \pm	2'

PRODUCT NAME :
NanoSIM 7 pin H1.43 LIFT COVER

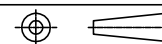
PRODUCT NO. :
NS143-T1151-01

DRAWING NO. :
D-NS143-T1151-01

DRAWING: Alexander
DATE: 2023.06.25

CHECK: DATE:

APPROVED: DATE:



SCALE: 1:1
DWG ID: C D
REV.: X0
PAGE: 1 of 1

REVISION NO.	ECR NO.	DESCRIPTION	MARK	DATE
X0	---	NEW RELEASE	Alexander	2023.06.25

1

2

3

4

5

6

6