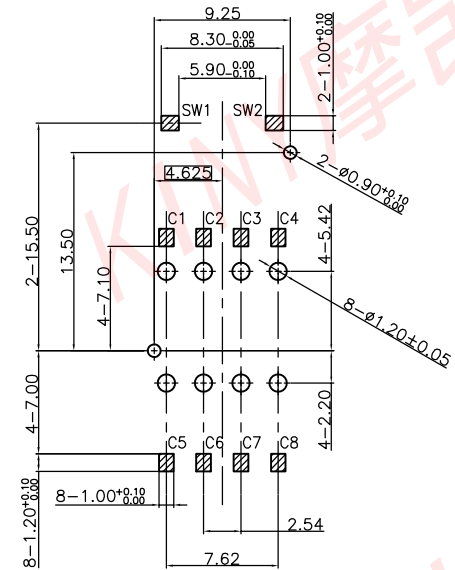
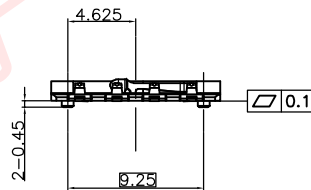
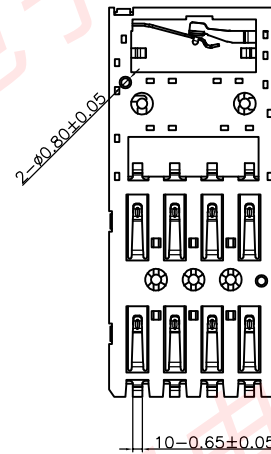
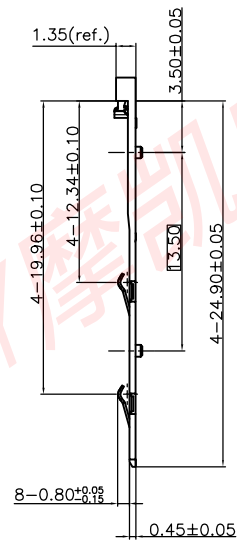
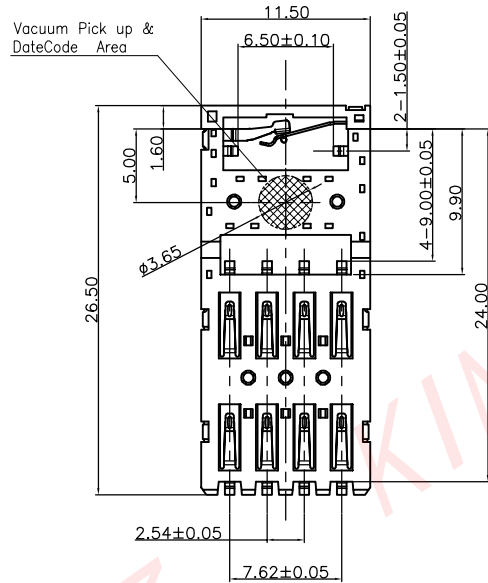
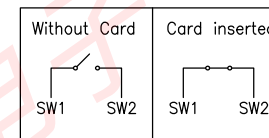


\* 所有原料材质, 生产制程, 电镀必须符合IPC要求

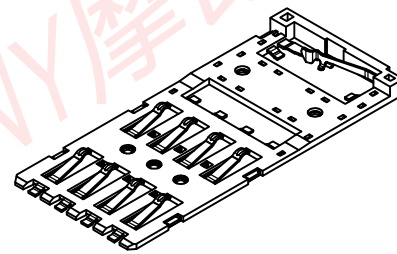


▨ BOARD PAD    ○ HOLE  
Recommended PCB Layout  
General Tolerance : ±0.05mm



NOTE :

1. Material:
  - 1-1 Housing: High Temperature Thermoplastic, LCP, Color: Black, UL94V-0
  - 1-2 Terminal and Switch: Phosphor Bronze, T=0.15mm
2. Plating:
  - Contact Area: Gold 3μ"
  - Solder Area: Gold Flash.
  - Underplating: Ni overall 50μ" min.
3. Specification:
  - 3-1 Contact Current Rating: 0.5A
  - 3-2 Dielectric Withstanding Voltage: AC500V r.m.s.
  - 3-3 Insulation Resistance: 1000 MΩ Minimum, at DC 500V.
  - 3-4 Contact Resistance: 100 mΩ Maximum.
  - 3-5 Mating Cycle: 100,000 Insertions.



A	----	NEW RELEASE	Jack	2020.10.21
REVISION NO.	ECR NO.	DESCRIPTION	MARK	DATE

		<b>东莞市摩凯电子有限公司</b>			
		DIMENSIONS INIT: mm UNLESS OTHERWISE SPECIFIABLE	PRODUCT NAME : SmartCard H0.45 8+2Pin	DRAWING: Jack	DATE: 2020.10.21
DIMENSION TOLERANCE X.X: ± 0.35 X.XX: ± 0.20 X.XXX: ± 0.10 ANGULAR: ± 2'	PRODUCT NO. : SM045-T2100-01	CHECK: Alex	DATE: 2020.10.21		
	DRAWING NO. : D-SM045-T2100-01	APPROVED: Alex	DATE: 2020.10.21		
		SCALE: 1:1	DWG ID: C D	REV.: A	PAGE: 1 OF 1